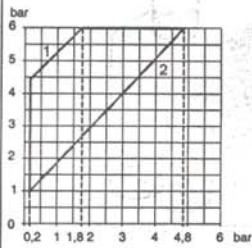
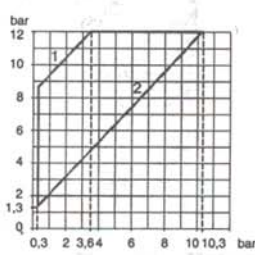


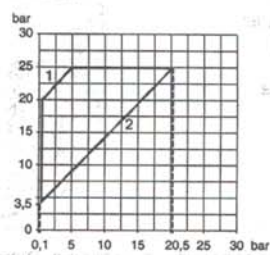
XMe-06



XMe-12

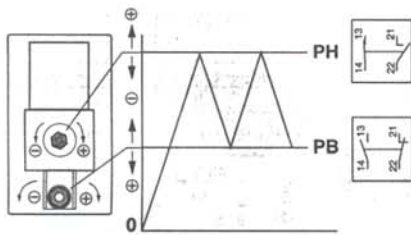


XMe-25

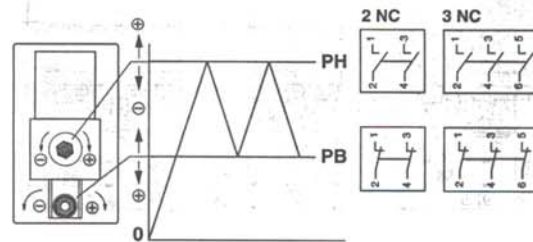


1 : Maximum differential - Ecart maximaux - Maximale hysteresen - Intervalos máximos - Differenziali max - intervalos maximos
 2 : Minimum differential - Ecart minimaux - Minimale hysteresen - Intervalos mínimos - Differenziali min - intervalos mínimos

XMx/XMA

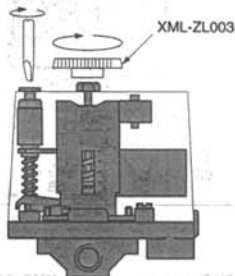


XMP



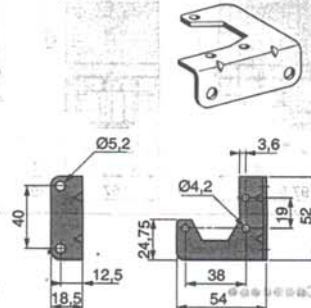
PH : High setting point - Point haut - Oberer Schalterpunkt - Punto de disparo superior - Punto di scatto superiore - Ponto alto
 PB : Low setting point - Point bas - Unterer Schalterpunkt - Punto de disparo inferior - Punto di scatto inferiore - Ponto baixo

Setting
 Réglage
 Einstellungen
 Adjustes
 Regolazione
 Reglagem



Fixing bracket
 Ecuere de fixation
 Befestigungswinkel
 Escuadra de fijación
 Squadra de fissaggio
 Esquadro de fixaçao

XMA-ZL001



! DANGER / PELIGRO / DANGER

HAZARDOUS VOLTAGE

Disconnect all power before servicing equipment.

Electric shock will result in death or serious injury.

TENSION PELIGROSA

Desenergice el equipo antes de realizarle servicio.

Una descarga eléctrica podrá causar la muerte o lesiones serias.

TENSION DANGEREUSE

Couper l'alimentation avant de travailler sur cet appareil.

Une électrocution entrainera la mort ou des blessures graves.